



CLIENT BOOKKEEPING SOLUTION[®]

BUSINESS BOOKKEEPING SOFTWARE TO HELP YOU DO WHAT YOU DO BEST—
TAKE CARE OF YOUR BUSINESS.

CBS CHECKWRITER
CBS ACCOUNTS PAYABLE
CBS ACCOUNTS RECEIVABLE
CBS FINANCIAL STATEMENTS

OMNEX
ACCOUNTING & TAX SERVICES

12740 W. Warren Ave. Suite 200
Dearborn, MI 48126
P. (313) 846-3322
F. (313) 846-4446
WWW.OMNEXTAX.COM

SPEND MORE TIME MANAGING YOUR BUSINESS (AND LESS TIME ON BOOKKEEPING TASKS!)

Client Bookkeeping Solution (CBS) is designed to help you manage your daily checkwriting, recording, and business bookkeeping needs—so you can focus on running your business. It offers you ongoing and immediate access to all your checking account balances for an up-to-the-minute picture of your cash flow, and it helps you complete your bookkeeping with speed and accuracy.

We customize CBS for your business. We work with you to determine which setup options, features, and functions will work best for you. We set up your accounting information so transactions transfer cleanly and completely into our professional accounting software. Prior to transferring data, we review any electronic notes you may have. CBS organizes your information in a way that enables us to get a clearer, more thorough picture of your business performance and to produce the financial statements, reports, and/or analyses you need to make informed business decisions.

CBS gives you everything you need—full-featured bookkeeping software that follows the accounting principles we use in our firm, along with advanced capabilities such as online banking and an automated way to communicate questions or concerns with us. With CBS, you can handle your day-to-day bookkeeping needs easily, and leave the more complex accounting to us while you focus on making your business thrive.

MAXIMIZE THE PRODUCTIVITY OF YOUR BUSINESS (AND LEAVE THE ACCOUNTING TO US!)

With CBS you will:

- **Focus more on running your business—and spend less time on bookkeeping.**
- **Use intuitive, easy-to-use software to accomplish your daily bookkeeping tasks.**
- **Rely on a trusted resource—us, your accounting firm—when you need help or have a question.**

The CBS family of software includes four easily integrated modules to help you efficiently and effectively manage your checkwriting and bookkeeping. These modules include:

- **CBS CheckWriter**
- **CBS Accounts Payable**
- **CBS Accounts Receivable**
- **CBS Financial Statements**

Details about each of these modules, as well as the benefits of CBS ASP, can be found on the following pages. If you have any questions about the benefits of CBS, please contact our office.

CBS: OFFERING ADVANCED, COMPREHENSIVE FEATURES TO SIMPLIFY YOUR BOOKKEEPING TASKS AND HELP YOU MANAGE YOUR BUSINESS

Client Bookkeeping Solution offers several helpful features that make it easy for you to accomplish your bookkeeping tasks as quickly as possible. Some features shared by all CBS applications are:

- **Online Banking**—Perform online banking securely, including bill pay, funds transfers, and downloading of bank statements for maximum convenience and speed. Online banking supported by your financial institution helps you to manage cash flow, set dates for payment, and keep track of payments that have cleared (not to mention save on postage and envelopes).
- **Electronic Notes**—If you have a question about a transaction, attach a message to your transactions for us to review. Electronic notes help to flag your questions or potential issues so that they receive immediate attention and action from us. No more waiting for your questions to be answered—you can be sure the data we’re using is accurate.
- **Management Reports**—Print numerous informative management reports to help you make informed business decisions based on up-to-date, relevant, and thorough data.
- **Layout Editor**—Create professional checks and forms using an intuitive interface to easily view your layouts as you design them. You can also add your company logo and electronic signatures to checks and forms.
- **Help**—Get answers to your questions quickly with the comprehensive system help files. The built-in help also includes searchable user guides and training aids.
- **Security**—Ensure the confidentiality of your data with a secure password-protected system.

HOW CLIENT BOOKKEEPING SOLUTION WORKS

WE’LL INSTALL CBS AND SET IT UP FOR YOU. THEN, DURING EACH PROCESSING PERIOD...

YOUR OFFICE

- You write checks and record your company’s day-to-day transactions in CBS.
- If you have questions, attach an electronic “Note to Accountant.”
- When the period is complete, make your data available to us online, via email, or via removable media.

OUR FIRM

- We retrieve your transaction information and, to avoid potential that data entry errors, transfer it directly into our system.
- We review your notes, answer your questions, and ensure transactions are marked for the proper accounts.
- We prepare your financial statements and documents, provide analysis, offer advice, and then deliver your statements to you.



USE CBS ASP—FOR ANYTIME, ANYWHERE ACCESS TO YOUR SOFTWARE

Now you can access your CBS software 24 hours a day, seven days a week from any location—with CBS ASP. CBS ASP uses Application Service Provider (ASP) technology to enable you to access your CBS software via our website from any location. CBS ASP, software works just as if you installed it on your computer. And we'll have access to your data any time we need it—there's no need for you to send us your data via CD or email.

And with CBS ASP, you won't need to take time away from running your business to install software updates because updates are done automatically through the power of the Internet. With CBS ASP, your CBS software is available to you through a portal—a private, secure area on our website. With CBS ASP, you will always be using the most up-to-date version of the program—with no manual updating required!

We will work with you to determine if CBS ASP is the most efficient solution for you.

HOW CBS ASP WORKS

It's all done through advanced private portal technology that enables you to access CBS via the Internet through our website, rather than a desktop installation. We'll provide you with a secure, private, and personalized portal on our website where you can access your CBS software. You simply visit our website and enter your user ID and password to gain access to your portal and your CBS application software. If you've ever accessed your personal bank information or shopped online, you've used a portal—it's that easy!

With CBS ASP, the software works just as if you had installed it on your computer. However, the software is actually running on servers housed in a world-class data center, where your data is stored and protected by a state-of-the-art, fail-safe system—completely secure and continually archived. By accessing CBS online, computer hardware requirements can be minimized and you can extend the life of your computer hardware.

Consider the value and benefits of CBS ASP:

- **Offers the convenience of anytime-anywhere access—** Your CBS software is available at any time and from anywhere you have access to the Internet. You and your staff are not limited to working only from the office.
- **Saves you time when exporting your data—** We simply access your transaction data over the Internet with the click of a mouse. No creating and swapping of CDs or other media. It's easy and instant!
- **Eliminates the need to download software updates in your office—** CBS ASP always provides you with the most current software release, without the inconvenience of having to install updates manually.



CBS CHECKWRITER

CBS CheckWriter is the core module of CBS software. It automates your check writing and daily bookkeeping functions—enabling you to keep track of your checkbook balances at all times. CBS CheckWriter is intuitive and easy to use—significantly reducing your learning curve. We'll work with you to set up CBS CheckWriter to work best for you. With CBS CheckWriter you will:

PRINT PROFESSIONAL CHECKS, SAVE SIGNIFICANT TIME, AND MINIMIZE TEDIOUS TASKS

- Work with **multiple checking accounts** at one time.
- Quickly **reproduce periodic memorized transactions**. For example, you can schedule recurring payments for each vendor or payee without having to re-enter the data.
- Choose from **predefined check layouts** provided with the software or customize your own check layout using the program's graphical Layout Editor with MICR encoding, logos, and electronic signatures.
- **Record all account activity** quickly and easily: bank deposits, ATM activity, debits, credits, transfers, and journal entries.
- **Add information on the fly** during data entry for new general ledger accounts, vendors, and employees.
- Maintain **running checkbook balances**. You can also view "tentative balances" when checks have not yet been printed.
- **Distribute deposits and check amounts** to as many accounts as needed.
- Print checks **individually or in batches** and with or without reports.
- Enter and print **regular checks** from as many as 100 different checking accounts.
- Print **mailing labels** for vendors and/or employees.
- Set individual **security levels** for each checkbook.
- **Pay bills and transfer funds online** (with financial institutions that support those features).

MAXIMIZE PRODUCTIVITY

CBS CHECKWRITER'S ROBUST FUNCTIONALITY ENSURES MAXIMUM PRODUCTIVITY

The powerful and robust features and functionality offered in CBS CheckWriter will help you quickly and efficiently process all your bank activity. With CBS CheckWriter, you can:

- Maintain an unlimited amount of **historical data**.
- **Set up vendors** so that you can quickly produce checks.
- Print **one or multiple checks** instantly.
- **Review all amounts onscreen** before printing checks.
- Use the **onscreen check register** to quickly navigate to any transaction.

FAST AND EASY TO USE, CBS CHECKWRITER SIMPLIFIES YOUR BOOKKEEPING WORK

CBS CheckWriter is more than a powerful bookkeeping system—it's also easy to use! Here are just a few of the many ways you can use CBS CheckWriter to simplify your checkwriting processes:

- **Consolidate multiple payments** to the same payee or vendor in a single check.
- Designate vendors as **Form 1099 recipients**.
- Apply **data-entry filters** to easily sort and analyze transactions.
- Use **search capabilities** to quickly locate specific items—such as checks, deposits, vendors, and more—to update or review information.
- Save **lists of frequently used information**, such as city names and zip codes.
- Set up **"memorized transactions"** as templates for creating repetitive transactions on demand or on a preset schedule.

CBS CHECKWRITER REPORTS HELP YOU MANAGE YOUR BUSINESS MORE EFFECTIVELY

CBS CheckWriter enables you to select and print several types of reports at any time. The reporting capabilities within CBS CheckWriter provide helpful, informative data based on all your system transactions. These reports fully support thorough analysis of your cash usage and sources and aid in sound business decisions. CBS CheckWriter reports include:

- Unprinted Checks List
- Printed Checks List
- Checkbook Register
- Deposits List
- Other Bank Items List
- Checkbook Reconciliation
- Memorized Transaction List
- Skipped Check Numbers List
- Journal Entries List
- Unprinted Checks Journal Entry List
- Transactions List
- Chart of Accounts List
- Unsuccessful Checks Audit
- Vendor List
- 1099 Transaction Activity
- Employee List
- Blank MICR Checks

POWERFUL

FLEXIBLE CHECKWRITING FUNCTIONALITY

Quickly and easily design personalized check layouts with the powerful capabilities of the Layout Editor. You can:

- Easily create and edit layouts using **drag-and-drop** functionality.
- Specify **different fonts** for any layout variable.
- Choose between **legal (two checks per page) and letter-size checks** (one or three checks per page).
- Select from **predefined check layouts** provided with CBS or create custom layouts with MICR encoding, logos, and electronic signatures.

FLEXIBLE

CBS CheckWriter—

With CBS CheckWriter, daily checkwriting and bookkeeping functions are automated—so you can keep track of your checkbook balances at all times. Enter amounts to be paid, who you're paying, and what you're paying for—all in a single window!

The screenshot displays the 'Society Bancorp - Checkbook' window. At the top, there are fields for 'Type' (Check), 'Vendor check', 'Pay preference' (Paper), 'Check #', 'Date' (10/20/09), 'ID' (BFL0), 'Paper' (Bumett's Flooring), and 'Amount' (3,729.00). Below these are tabs for 'Distributions', 'Address', and 'Details'. A 'Memo' field is present, followed by a table with columns: Account, Description, Amount, and 1099. The table contains three rows of data. To the right of this table is a 'Balance' button and a 'Print' icon. At the bottom, there are buttons for 'Options...', 'Files...', 'Delete', 'Print...', and 'Save'. Below the buttons is a detailed transaction list table.

Account	Description	Amount	1099
502	Cost of Sales Remodels	1,200.00	Other Pay H
505	Cost of Sales - New Units	1,729.88	Other Pay H
506	Cost of Sales - Co-Op	800.00	Other Pay H

Date	Number	ID	Description	Payment	Deposit	Balance
10/15/09	1422	IRS	Internal Revenue Service	3,218.76		54,366.74
10/15/09	1423	CAST	State of California	228.22		54,138.52
10/15/09	1424	DRST	State of Oregon	85.58		54,052.93
10/15/09	1425	INS	Tanison Insurance	372.45		53,680.48
10/31/09			ARR Deposit		4,104.65	57,065.13
10/31/09	100	WGLA	Wachtenaw Glass	147.00		57,718.13
10/31/09	1415	1	Joe T. Smith	1,665.05		56,053.08
10/31/09	1416	4	Julie P. Miller	3,046.29		53,006.79
10/31/09	1417	5	Perry W. Navarre	2,672.61		50,334.18
10/31/09	1426	LEGAL	Smith & Wright, Attorneys at	1,500.00		48,834.18
10/31/09	1427	CARR	Carlson Realty, Inc.	12,525.00		36,309.18
10/31/09	1429	ELEC	Tanison Electric	259.78		36,049.40
10/31/09	1429	FORD	Varsity Food	822.00		35,227.40
10/31/09			Lei's Office Equipment	32.45		35,194.95
10/31/09			Gill Scout Cookies	30.00		35,194.95
			(New check-book item)			

Filter All T Bal 35,164.95 Bal 35,194.95 Adding

AUTOMATE YOUR PAYABLES PROCESS WITH CBS ACCOUNTS PAYABLE

CBS Accounts Payable offers you a clear picture of what you owe vendors and when payments are due—helping to automate the payables process. It helps you take advantage of early-payment discounts, avoid late-payment penalties, and more effectively manage your available cash. CBS Accounts Payable offers you an ongoing and complete picture of your payable accounts to help you successfully manage your business. Using CBS Accounts Payable, you can:

- **Record payables**, track cash requirements, and produce aging reports.
- Reduce data entry by automatically using **vendor default information**.
- Handle vendor-issued **credit memos**.
- **Accommodate handwritten checks and cash payments** after-the-fact.
- Distribute payable amounts to an unlimited number of **general ledger accounts** per payable.
- Handle payments for which only a portion of the amount is reportable on **Form 1099**.
- **Override pre-calculated information** to accommodate special circumstances, such as a change in discount amount.
- Designate **check stub regions** to present details, including invoice listings.
- **Trace payment applications** to source payables with a single mouse click.
- Review **payment history** for any payable.
- Handle vendors with **multiple 1099 form types**.

MORE EFFECTIVELY MANAGE YOUR CASH FLOW

- Designate fixed expenses as **memorized payables** to automatically notify you of payment dates—never miss another payable date, pay late fees, or miss out on early payment discounts.
- Take maximum advantage of early payment **vendor discounts** for an unlimited number of modifiable discount terms. CBS Accounts Payable automatically calculates discounts and net payable amounts, based on dollar amounts or percentages.
- Print detailed **vendor history** to negotiate more favorable terms.

SAVE SIGNIFICANT TIME AND MINIMIZE TEDIOUS TASKS

- **Automate your accounts payable** tasks—minimizing data re-entry, manual effort, and your time investment.
- Directly **access check printing** from the payables data entry window.
- **Consolidate an unlimited number of payables** to be paid with one check or multiple checks—don't waste time entering and printing individual checks.
- Generate **management reports** to determine your current payables status at any time.
- Generate **payable items** automatically for recurring payables, eliminating the need for additional data entry.
- Automatically **track payroll liabilities** when used with CBS PayCheck.
- Maintain an **unlimited number of historical transactions**.

EFFECTIVE

USE REPORTS TO MANAGE YOUR ACCOUNTS PAYABLE MORE EFFECTIVELY

Many reporting options are available, in both summary and detail formats, to help you manage your payables more effectively. You can view an accounts payable report at any time in order to support key management decisions and communicate important financial information to staff who require it. The CBS Accounts Payable module includes:

- Cash Requirements Report
- Cash Requirements Projection Report
- Aging Schedule
- Purchases Journal
- AP Transactions List
- Vendor Activity Report
- Vendor List
- Payable/Payment List



Automate management of your accounts payable and take advantage of early payment discounts, avoid late payment penalties, and effectively manage your available cash.

AUTOMATE

Account	Description	Gross	1099	Paid to Date	Current Open Balance
502	Remodels	7,250.95		0.00	7,250.95
505	New Units	0.00		0.00	0.00
506	Co-ops	7,907.05		0.00	7,907.05

Payer Name	Vendor ID	Inv #	PO #	Invoice Date	Due Date	Net Open
Internal Revenue Ser	IRS	PAYCHECK		10/31/09	10/31/09	3,413.39
Internal Revenue Ser	IRS	PAYCHECK		10/31/09	10/31/09	534.18
Lin's Office Equipme	LES	384185		08/21/09	08/21/09	0.00
State of California	CAST	PAYCHECK		11/27/08	11/27/08	0.00
State of California	CAST	PAYCHECK		10/31/09	10/31/09	253.80
State of California	CAST	PAYCHECK		10/31/09	10/31/09	-35.95
State of Oregon	ORST	PAYCHECK		11/27/08	11/27/08	0.00
State of Oregon	ORST	PAYCHECK		10/31/09	10/31/09	85.59
Swift & Wight, Atton	LEGAL	PREPAYME		10/31/09	10/31/09	-1,500.00
Tanison Electric	ELEC	67867-8		10/31/09	10/31/09	0.00
Tanison Insurance	INS	654613		11/30/08	11/30/08	0.00
UPS	UPS	SHIPPING		10/31/09	10/31/09	158.00
Varsity Ford	FORD	8543		09/30/08	09/30/08	0.00
Varsity Ford	FORD	4564		10/31/09	10/31/09	822.00
Washereau Glass	wGLA	134567		10/31/09	11/30/09	0.00
Washereau Glass	wGLA	OCTOBER		10/31/09	11/30/09	150.00
Zeyer Medical	ZEVER	678678		10/31/09	10/31/09	50.00

CBS Accounts Payable—

With CBS Accounts Payable, it's easy to track the amounts you owe and the amounts that have been paid to vendors. By viewing just one screen, you can see a summary of vendors to whom you owe payments, how much you owe, and both invoice dates and payment due dates.

SIMPLIFY YOUR ACCOUNTS RECEIVABLE PROCESSES

CBS Accounts Receivable automates your invoicing and billing functions, maintains receipts information, and tracks sales to give you an ongoing, accurate picture of your receivables. CBS Accounts Receivable also significantly reduces data entry time—you enter customer data only one time! Once you have set up customers, invoice items, payment terms, sales tax codes, and optional sales persons, the appropriate invoice information automatically transfers into the invoice. Using CBS Accounts Receivable, you can:

- Designate **information to appear on invoices**, such as program-calculated sales tax, aging messages, and formatted descriptions.
- Incorporate **transaction detail** and account status information on invoice forms or create invoices without item detail.
- Enter **pending transactions** for review before accepting the data as “final.”
- Maintain **separate mailing and billing addresses** for each customer.
- Maintain an **unlimited amount of transaction history** to analyze/monitor sales and customer activity.
- Automatically apply payments based on **invoice date or open amount**, or manually apply multiple customer payments to one or more invoices.
- **Unapply a payment** from an invoice at any time.
- **Edit account information** at any time to maintain accurate accounting of all your sales activity.
- Apply data filters to **easily sort and analyze transactions**. For example, you can sort transaction information for a specific customer or view all transactions with open balances.
- **Edit transaction records**, remove customer payments as needed, and enter invoices and cash receipts after-the-fact to maintain accurate accounting of all sales activity.
- Generate reports to determine your **current receivables** status at any time.
- Deposit a customer payment to **multiple checking accounts** or to cash expenditures.
- Accept credit card payments from customers and process them through InterceptEFT.

SAVE TIME AND MINIMIZE TEDIOUS TASKS

- Produce **customized invoices and statements** efficiently using preset customer data—with no need to re-enter information in each billing cycle.
- **Group and sort data quickly** and easily to locate needed information—don’t waste time with tedious account-by-account searching.
- Choose from **numerous predefined invoice forms** to “jump start” your billing process—no need to start with a blank page.
- Select the **date range for statements** to control the exact information presented or reprint a prior-period statement for customers who request it.
- Set up **customer-specific informational prompts** to provide general information when accessing any customer’s information.
- Process data for an **unlimited number of customers** with an unlimited number of invoices per month—design your system to work for you.
- Create **customized invoices** to show as much or as little detail as needed, including aging, item detail, payment detail, and freight costs.

USE REPORTS TO MANAGE YOUR ACCOUNTS RECEIVABLE MORE EFFECTIVELY

CBS Accounts Receivable enables you to choose from several reports (including report activity from historical periods) to help make accurate, successful business decisions. Run a predefined or customized report at any time to review the status of accounts and maintain an ongoing and up-to-date view of all your transactions. CBS Accounts Receivable reports include:

- AR Deposit Journal
- Aging Schedule
- Customer Ledger
- Invoice/Payment List
- Memorized Transaction List
- AR Transactions List
- Receipts Projection Report
- Sales Tax Report
- Sales Report
- Sales By Item/Service
- Invoice Items List
- Customer List

CUSTOMIZE



CBS Accounts Receivable—

CBS Accounts Receivable gives you an ongoing, accurate picture of your receivables, including total amounts due from a specific person, total open balances, and invoices to which the payments are applied.

CBS FINANCIAL STATEMENTS

With CBS Financial Statements, you can print your own set of standard interim financial statements at any time. Statements include:

- Balance Sheet
- Income Statement
- Cash Flow (direct and indirect)
- Trial Balance

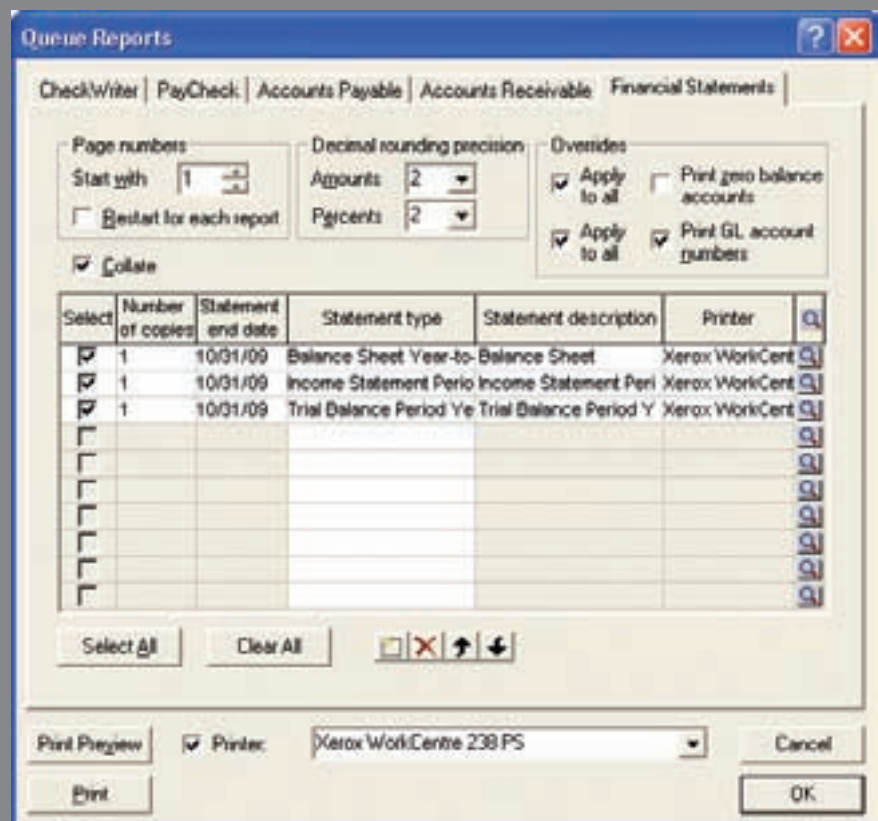
We'll work with you to decide if you can benefit from the ability to produce interim financial statements throughout the month. If so, you will no longer have to wait until we can provide a month-end financial statement. You can get this information about your financial position whenever you want it with CBS Financial Statements. This module offers several options, such as balance periods (for example, current year only, current year vs. prior year, and current period), percentages, individual departments, and more.

Of course, we will still produce your official financial statements at regular intervals, but CBS Financial Statements will allow you to get a quick snapshot of where you stand at any time during your processing period.

The CBS Financial Statements module can be purchased and licensed separately. For more information about CBS Financial Statements, please call us. We will work with you to decide if this module will meet the unique needs of your business.

CBS Financial Statements—

Use CBS Financial Statements to print a variety of financial statements throughout the month. Select the ending date for the statement and which of four statements you want to print—using just one dialog.



CBS: THE BEST BOOKKEEPING SOFTWARE FOR YOU

CBS CHECKWRITER • CBS PAYCHECK • CBS ACCOUNTS PAYABLE •
CBS ACCOUNTS RECEIVABLE • CBS FINANCIAL STATEMENTS

CBS is easy to use and helps you organize and manage your bookkeeping information with maximum efficiency. Using CBS, you have instant access to checkbook balances while speeding through the time-intensive and repetitious day-to-day bookkeeping tasks.

We customize CBS to meet the needs of your business. CBS's modular approach lets us work with you to determine which modules you need to start. We can also add new modules as your needs grow and you become more familiar with the program.

Quality data is assured. CBS applies the principles of debits and credits to your day-to-day accounting and provides a detailed audit trail. Many off-the-shelf packages don't operate according to the fundamental accounting principle of debits and credits, and they don't provide an adequate audit trail. And their financial reports often don't provide the information we need to accurately prepare your tax returns.

DO WHAT YOU DO BEST—AND LEAVE THE ACCOUNTING TO US!

CBS offers tremendous time savings and enhanced productivity, so you are free to concentrate on running your business while we take care of your accounting needs. And when you need assistance, you can call us directly, rather than a faceless 800 number that doesn't know your name or your business. CBS enables you to work directly with us to consistently gain a better and more thorough understanding of your business.

CBS IS MORE THAN AN EASY-TO-USE, RELIABLE ACCOUNTING SYSTEM. IT'S THE INTELLIGENT SOLUTION FOR YOUR DAILY BOOKKEEPING NEEDS!



SYSTEM REQUIREMENTS

Achieve Optimum Product Performance—Periodically Update Your Hardware

CBS is designed for professional production work. These system requirements are based on the assumption that businesses are replacing their computer hardware and operating systems on an approximate three-year rotating basis. While the software may operate on less powerful hardware, we do not believe it will perform at a level suitable for production work in these environments. Of course, as processing speed and amount of RAM are increased, software performance will also improve. Check with us for details.

Operating System

We fully support Windows XP Professional®, Windows Vista® (Ultimate, Business, and Enterprise Editions), Windows Server® 2008 (standard install), Windows 2003 Server Network® (all editions except Web Edition).

Processor/Memory

- We recommend a processor speed of 2 GHz or higher.
- An Intel® or AMD™ processor.
- 2 GB RAM is recommended.
- A CD-ROM drive, or a access to a CD-ROM drive for software installation (not required for CBS ASP clients). For installations that are done via the Internet, a high-speed Internet connection is required.

Monitor—SVGA monitor, capable of 256 colors and 800 x 600 resolution or higher is required. We recommend a monitor 17" or larger, with minimum requirement of 15".

Modem—A 56 KB or faster Internet connection is required for specific features, such as direct deposit, online banking, and remote payment authorization.

Printer—Windows compatible laser or inkjet printer.

Network Requirements—CBS modules are available in a multi-user version, and CBS can also be installed in a network environment. Multiple users may simultaneously access the company data since access to documents is transaction-based rather than module-based. CBS multi-user capability is supported on Windows 2000 Professional and XP Professional operating systems.

CBS ASP TECHNICAL REQUIREMENTS TO CONSIDER

Bandwidth—Because the CBS ASP software is accessed via the Internet rather than from a desktop installation — and because a very large amount of data may need to travel back and forth through your Internet connection — the performance of the software is subject to the same speed variations that you would occasionally experience using the Internet. For this reason, the speed and reliability of connection available to your business when accessing the Internet has a significant impact on the performance of the CBS software in the ASP environment.

To achieve optimum product performance, when running CBS ASP, you would need to rely on a constant Internet connection with minimum bandwidth of 128 kilobits per second. An Internet connection of 128 Kbps or greater can be obtained via one of the following:

- Dual-channel ISDN
- DSL
- Cable modem
- T1 (full or partial)

While these types of connections are subject to the limitations of the Internet, they should normally deliver performance levels comparable to or faster than those that can be achieved with the desktop version of the software. It should be noted, however, that even with the high-speed connection options listed above, actual connection speeds can be affected by the quality of service available from your Internet service provider.

Hardware—Your CBS software will perform as well over the Internet from any computer or laptop as it does on your local hard drive or network. Our software provider is responsible for hardware, software maintenance, and updates—relieving you and your staff of this task. All you have to do is log on and operate the software.



12740 W. Warren Ave. Suite 200
Dearborn, MI 48126
P. (313) 846-3322
F. (313) 846-4446
WWW.OMNEXTAX.COM